

www.metro-region.org



2006-07

SOLID WASTE AND RECYCLING
Year in Review



Metro | *People places. Open spaces.*

METRO COUNCIL PRESIDENT Message



Over the last year the Metro Council has launched new initiatives and continues to lead the way in providing the region with a state-of-the-art waste management system. Some of the important goals that determine how we manage the region's solid waste include protecting the health of our region's environment, citizens and the economy. In its solid waste and recycling programs, the Council emphasizes waste reduction, recovery and recycling, and the proper disposal of garbage to conserve our precious natural resources.

The Metro Council launched initiatives to reduce food waste and construction debris in the business community, with innovative programs in organic waste composting, re-selling commercial construction materials, and donating food to feed the hungry.

The Solid Waste and Recycling Department completed the Regional Solid Waste Management Plan (RSWMP) this year, which provides program and policy direction for the next decade. And, the Metro Council will be evaluating alternatives, including rail and barge, for transporting the region's waste to the Columbia Ridge landfill in Gilliam County, near Arlington, Oregon, 150 miles east of Portland.

The Year In Review features the 2006-07 highlights of Metro's Solid Waste and Recycling Department.

– David Bragdon, Metro Council President

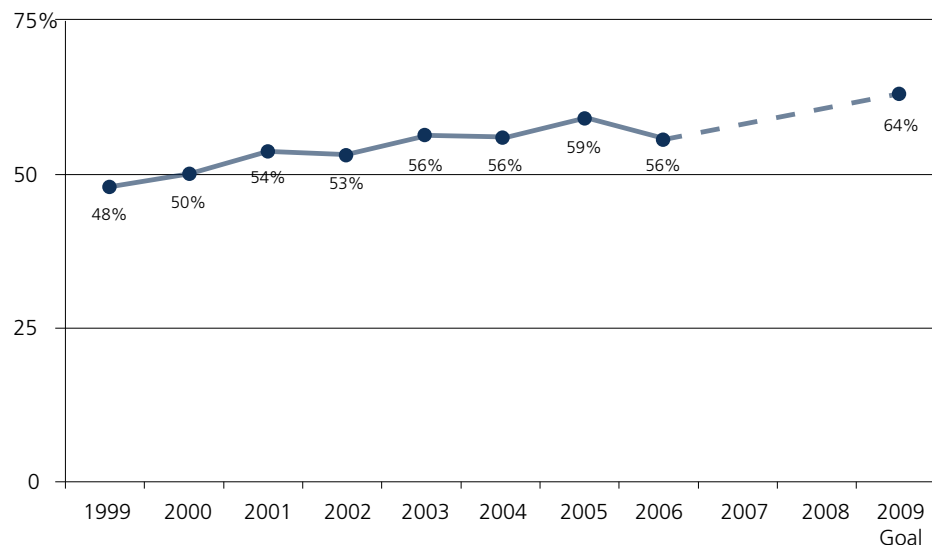


SOLID WASTE AND RECYCLING Year in Review

WASTE GENERATION, RECOVERY AND DISPOSAL IN 2006

Each year, the Oregon Department of Environmental Quality (DEQ) issues a materials recovery report that shows the amount of waste generated, disposed and recovered by designated areas in the state called “wastesheds.” This waste includes materials from residential, business and construction sectors. The Metro region is counted as a single wasteshed, and “waste recovered” includes material that is collected for recycling, composting or energy recovery. DEQ also awards recovery “credits” for certified waste prevention, home composting and reuse programs.

Waste recovery rate



WASTE REDUCTION INITIATIVES AND PROGRAMS

Over the past 10 years, the region has made significant progress in reducing waste, achieving a 56 percent recovery rate in 2006. To achieve an even higher recovery rate, Metro and local governments have focused on three sectors to increase recovery: organics (food waste), business (primarily paper-consuming businesses) and construction and demolition.

Organics This year’s focus was on encouraging businesses to participate in the organics composting program. In FY 2006-07, the organics program reached the milestone of 1,000 tons of organic waste composted per month. The program continues to grow steadily with the addition of businesses in the City of Portland and selected businesses in other areas of the region. Additionally, the City of Gresham completed a successful commercial organics pilot project with Gresham Sanitary and is considering a permanent program in 2008. Currently, 210 businesses participate.

Cedar Grove Composting remains the primary processor for the Metro area’s organic waste. However, as the organics composting program grows, the need for greater composting capacity throughout the region, including the need for a local composting facility, increases. Efforts will continue in the years to come to meet that growing need.

BY THE NUMBERS

2,696,644
tons waste generated

1,335,413
tons waste recovered

1,361,231
tons waste disposed

50%
base recovery rate

6%
waste prevention credits

56%
waste recovery rate with
credits

“Businesses have a more measurable impact on the environment than I had previously realized. The campaign allowed me to see just how much a difference a business can make by taking some simple steps. Furthermore, we’re saving money as an organization...”
– First Tech Credit Union

“Our contact with Recycle at Work was wonderful, patient and they answered all our questions.”
– Columbia Drywall

Business The Recycle at Work program provides education and technical assistance on recycling, waste prevention and buying recycled-content materials to businesses in the Metro area. Metro’s Recycle at Work program provided approximately \$600,000 to local governments to hire recycling specialists (10 FTE), who assisted 1,000+ businesses in setting up or improving their recycling and waste reduction programs. This year, nearly 200 additional business partners committed to improving their recycling programs and the campaign reached more than 900,000 people in region.

Construction and demolition The construction and demolition industry has one of the single largest impacts on the region’s landfills. Metro estimates that 20 percent of the region’s 1.3 million tons of waste heading to regional landfills comes directly from building activity. Of that waste, as much as 60 percent could be recycled, reused or otherwise diverted from the landfills.

During FY 2006-07, the construction and demolition work group developed and launched the free BoneyardNW.com website to provide local markets to contractors for used commercial building materials. Since the February 2007 launch, the site has signed up 134 members and had 11,000 visits.

In FY 2006-07, Metro delivered 10,000 copies of the Recycling Toolkit, to the region’s building industry. Additionally, the team created the Toolkit Smart Start Guide, a local how-to blueprint for construction salvage and recycling.

.....

SOLID WASTE DISPOSAL OPERATIONS

Metro operates two solid waste transfer and recycling facilities that serve citizens and commercial haulers in the region. Metro also regulates other privately owned regional transfer and recycling facilities.

In FY 2006-07, the waste disposal operations division completed renovating the preload compactor at Metro Central transfer station. The renovation cost less than half the cost of a new compactor and should enable the compactor to serve the facility for 8-10 more years. To improve wood recovery, the woodline conveyor system at Metro Central was replaced. In FY 2006-07 activity at both transfer stations included:

- 405,057 total tons of wet waste delivered
- 199,412 total tons of dry waste delivered
- 604,470 total tons of municipal solid waste delivered
- 15 percent dry waste recovered

Transportation and landfilling Not all of the waste generated in the Metro region can be handled within the region. To safely deliver compacted waste from Metro’s two transfer stations to the Columbia Ridge Landfill in Gilliam County, 150 miles east of Portland, Metro contracts with CSU Trucking. In FY 2006-07 CSU Trucking delivered 18,480 total loads: 8,541 loads from Metro South Station and 9,939 loads from Metro Central Station.



MANAGING TOXIC TRASH

One of Metro’s goals is to help residents and businesses properly dispose of toxic waste. Metro operates two hazardous waste facilities where citizens and small businesses bring all types of waste – from paint to pesticides, aerosols to automotive products. Neighborhood “roundups” also provide convenient disposal options for neighborhoods more distant from the permanent facilities. Small businesses are served by a Commercial-Exempt Generator Program.

Household Hazardous Waste In 2007, the Metro Council passed an important ordinance that permanently drops fees charged to Metro’s household customers for residential hazardous waste collected at Metro facilities and roundups. More than 57,000 household hazardous waste customers are served annually by the hazardous waste program.

During 2006, 45,226 household customers brought waste to Metro’s two permanent household hazardous waste facilities. After 15 years of steady growth, this number is very close to last year’s participation. Hopefully, this indicates customer growth and the use of toxics may finally be leveling off.

At the hazardous waste facilities, staff continue to educate customers about toxics and healthier alternatives. Both facilities installed new signs with messages on how to reduce hazardous products in the home. At Metro Central, a median strip was converted into a small natural gardening showcase that drives home Metro’s message about using natural gardening techniques.

In addition, Metro staff provided toxics reduction education at community events. In 2006, 12,265 customers participated in 34 household hazardous waste collection events.

Household Hazardous Waste Collected FY 2006-07

	Customers	Pounds
Metro South/Central Facilities	45,226	3,737,126
Metro Community Round Ups	12,265	776,375
TOTAL	57,491	4,513,501

Commercial-Exempt Generator Program There has been explosive growth in the number of small business customers using Metro’s commercial exempt generator program. A total of 739 businesses – a 42 percent increase over the previous year – took advantage of Metro’s easy-to-use, modestly-priced hazardous waste disposal program.



Household hazardous waste collection event



BY THE NUMBERS

567,220
gallons processed

37%
recycle rate

92,982
gallons produced

107,591
gallons sold

5,040
gallons donated

\$700,994
sales revenue

11,643
customers

\$6.52
average price per gallon

\$176,643
recycling services
revenue

\$101,184
other revenue

\$978,821
total MetroPaint revenue

DEALING WITH LEFT OVER LATEX PAINT

In an effort to keep latex paint out of the waste stream, Metro collects and reprocesses left-over paint and sells it under its own brand, MetroPaint 100 Percent Recycled Latex. The increasing popularity of the recycled paint is evident – revenue collected by Metro’s Latex Paint Recycling program increased by 19 percent over the previous year, coming close to \$1 million in total revenue.

One special highlight of the year occurred when Metro teamed up with MercyCorps and Portland’s “Flight of Freedom” to New Orleans. Metro donated 1,440 gallons of MetroPaint to assist residents impacted by Hurricane Katrina.

METRO’S REGULATORY ROLE

One of Metro’s key roles is ensuring that solid waste facilities located in the Metro region are operated in ways that protect human health and safety and the environment. Toward that end, Metro’s Regulatory Affairs division is responsible for licensing and monitoring private waste transfer facilities and certain recycling facilities.

- 333 facility inspections in FY 2006-07
- 1,962 dump site cleanups
- 12 regulatory authorizations (franchises, licenses)
- 37 enforcement actions
- \$418,245 penalties issued

Part of the Regulatory Affairs division’s role is enforcing regulations and preventing illegal dumping. A few of the enforcement activities in 2006-07 included:

Columbia River Cleanup Metro, the Multnomah County Sheriff’s Office, inmate work crews, Portland Fire Bureau and dive teams from both Multnomah and Clackamas Counties cleaned up a section of the Columbia River just north of the Portland airport. The clean up recovered 140 tires, 8 cubic yards of metal debris and 2 vehicles. An Environmental Protection Agency contractor later cleaned up nearly 200 rusty drums from the river.

Dry waste moratorium and Material Recovery Facility standards

Metro strives not only to recover materials that would otherwise be disposed, but also ensures recovery efforts are environmentally sound. A moratorium was adopted for new dry waste facilities until new material waste recovery standards could be established. The Metro Council adopted the standards and the Metro Chief Operating Officer established administrative procedures that require processing be done inside a building on an impervious pad to prevent contaminating soil and groundwater.

PLANNING FOR REGIONAL WASTE DISPOSAL

An important part of an efficient, safe disposal system is good planning. The Solid Waste and Recycling Department completed two major planning initiatives in FY 2006-07: the Regional Solid Waste Management Plan and the Disposal Planning System.

Regional Solid Waste Management Plan (RSWMP) Provides the metropolitan area with policy and program direction for the next decade (2008-2018). It also satisfies state law requiring the development of a waste reduction plan. Between 2004-07, more than 1,000 members of the public participated in public meetings and web-based comment opportunities to shape the Plan.

The Plan's program and policy direction are driven by several principals: 1) conserving resources for future generations, 2) sustainability principles and practices, 3) Metro's partnership with local governments and private industry and its role as a participant and a regulator in the transfer and disposal system and 4) reducing the toxicity of waste generated and disposed.

Disposal System Planning As part of the regional management planning process, Metro completed an analysis of facility ownership of the region's solid waste system. The study asked the question: Is it efficient and cost effective for Metro to continue to own disposal facilities? Based on the study results, the Metro Council adopted a resolution that called for continued public ownership of some system facilities that provide customers access with established disposal fees. The resolution also outlined a number of areas to be studied to improve the system's performance.

COMMUNITY ENHANCEMENT

In addition to waste disposal and recovery activities, Metro oversees several programs that help residents clean up and enhance their communities.

Neighborhood clean-up programs In FY 2006-07, the Metro Council awarded \$125,131 in disposal fee waivers for neighborhood cleanup events. Local governments received 25 percent of the funds, neighborhood associations received 60 percent and non-profit groups received 15 percent. Metro also awarded \$70,000 for local government neighborhood cleanup programs.

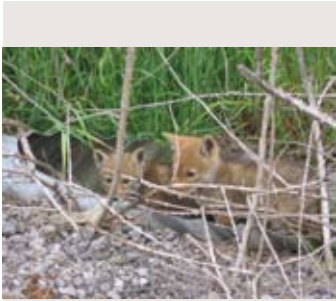
Community Enhancement Activities Since 1985 when the community enhancement grant program was established by an act of the Oregon legislature, the Metro Council has invested more than \$5 million in projects that benefit areas directly affected by the region's garbage disposal facilities. The four target areas include Northwest Portland (around the Metro Central transfer station), North Portland (around the now-closed St. Johns Landfill), Oregon City (near the Metro South transfer station), and Forest Grove (close to a privately-owned facility).



Neighborhood and natural area

Cleanup guide

The Solid Waste and Recycling department received a \$16,677 grant from the Oregon Department of Environmental Quality to research, write and produce a neighborhood, natural area and civic event cleanup resource guide. The guide will better enable community groups to organize and implement civic, neighborhood and nature area cleanup activities.



Wildlife at St. Johns landfill

Grants help residents create long-term improvements in their neighborhoods. The projects support the Metro Council’s goal of creating more livable communities. These projects result in increasing employment and economic opportunities; rehabilitating and upgrading residential housing; preserving wildlife, marine and recreational areas; improving public safety and enhancing neighborhood appearance or cleanliness; and providing programs and training opportunities that benefit youth and the elderly.

During FY 2006-07, residents benefited from approximately 75 local improvement projects that were awarded nearly \$401,000. Monies were distributed as follows:

- Metro Central: \$138,300 – 20 projects
- North Portland: \$52,031 – 25 projects
- Oregon City: \$105,140 – 8 projects
- Forest Grove: \$105,459 – 21 projects

A few of these projects included:

Restoring nature in neighborhoods by controlling invasive ivy and garlic mustard in and around Forest Park; cleaning up and restoring the Abernethy Creek area in Oregon City; and constructing an interactive spray park facility at Rivercrest Park in Oregon City.

Improving public safety by purchasing a security system for Linnton Community Center; hiring staff to present a parenting class in St. Johns aimed at reducing child abuse and neglect; and producing a community picnic to introduce neighbors to the Oregon City police and fire department staff.

Repairing and rehabilitating housing stock for qualified low-income homeowners in Forest Grove, and paying for non-refundable expenses for 15 homeless families moving into rentals in North Portland.

Training youth in a workforce services program to help Forest Grove residents earn a high-school equivalency certificate; and providing early literacy intervention to students at Joseph Gale elementary school in Forest Grove.

.....
ENVIRONMENTAL PROTECTION AND RESTORATION

One of the Metro Council’s goals is protecting the environment. From monitoring activities at the closed St. Johns landfill to creating new habitat for endangered birds, the Solid Waste and Recycling department programs help protect the environment and restore wildlife in the region.

St. Johns Landfill Metro is responsible for the environmentally sound closure and monitoring of the closed St. Johns landfill in North Portland. This year, Metro received an Environmental Excellence Award from the City of Portland for its work in investigating and modifying the landfill wastewater system to reduce pollution.

Three years ago, Metro initiated an investigation and feasibility study to identify risks and measures for controlling risks at the St. Johns Landfill. This fiscal year, Metro, with the assistance of the consulting firm CH2MHILL, completed comprehensive evaluations of groundwater quality and flow and sediment quality in the Columbia Slough. The results of this study will drive our future efforts at reducing risks to the environment from the closed landfill.

In cooperation with the Army Corps of Engineers and Oregon's congressional delegation, Metro secured an \$809,000 federal appropriation. The money will be used to restore a section of the eroding north levee at the landfill that poses a threat to public health and safety. The project is scheduled for summer 2008.

In an effort to increase the diversity of surface vegetation and improve habitat at St. Johns, test plots were developed in one section of the landfill, including planting 21 species of upland and wetland woody species (2,100 plants) and 9 species of flowering forbs (900 plants).

Solid Waste and Recycling staff also teamed with Metro's Parks and Greenspaces department to initiate a feasibility study for constructing a bridge over the North Slough to connect an existing trail with the landfill. A larger study of a trail alignment connecting the St. Johns neighborhood and the 40-mile loop trail system to the Smith and Bybee Wetlands Natural Area continues.

OUTREACH AND EDUCATION

Metro provides an array of information and services that help residents and businesses reduce the amount and the toxicity of waste generated in the region. A telephone hotline, recycling web pages, school curriculum and teaching aids, and regional advertising campaigns all help Metro provide information to thousands of people each year.

This year, the Recycling Information Center (RIC) distributed more than 145,000 various types of education materials. In addition, more effort was made to enhance communication with the region's growing Hispanic population. Two RIC staff speak Spanish and they provided outreach at several community events, conducted Spanish media interviews, and assisted 265 Spanish-speaking callers.

School education Metro believes it is important to teach young people about waste reduction and sustainability. Outreach and education staff reach out to students and adults at elementary, middle and high schools with assembly presentations, summer camps, contests, technical assistance and grant programs. This year, Metro's outreach efforts reached more than 52,000 people and included:

- 65 assembly performances with 19,297 participants
- 518 presentations with 20,503 participants
- 8 waste reduction workshops for 319 adults
- 13 community events which reached 1,809 children and adults

BY THE NUMBERS

97,094 calls to Metro Recycling Information Center. Down 2 percent from FY 2005-06.

56,135 visits to the Find A Recycler web pages. A 75 percent increase from FY 2005-06.



3,050 K-12 entries – the most ever – from 85 metro-area schools for the annual Earth Day Art Billboard Contest. More than 350 children and adults attended the art show and unveiling of the winning entries.

12 grant requests funded for K-12 area schools for projects such as composting, paper/plastics recycling, durable lunch trays and recycling containers for classrooms and hallways.

Launch of the successful Bag-Gone-It! program in which middle school students decorated hundreds of paper bags with waste reduction messages and handed out canvas bags to customers at grocery stores.

Natural Gardening Program Metro’s natural gardening program helps reduce toxics in the waste stream. In FY 2006-07, the program reached more than 8,000 residents. Events included natural gardening seminars, presentations at nurseries and events like the Yard, Garden and Patio Show and hosting the annual Garden of Natural Delights Tour that features 28 gardens grown without synthetic chemicals.

This year at Blue Lake Regional Park, hundreds of visitors planned and planted the Blue Lake Natural Garden. This community teaching garden, which features native and non-invasive exotic plants, helps educate residents about gardening without hazardous chemicals.

Toxics Reduction The Toxics Reduction Outreach program works closely with the Natural Gardening program to educate citizens about reducing toxic chemicals used in homes and yards. In addition to outreach to citizens and business customers at the hazardous waste facilities and at household hazardous waste collection events, Metro Toxics Reduction staff work in partnership with local governments on an annual regional storm water pollution prevention campaign. Metro also sponsored the “Chemicals Policy Symposium,” the first regional summit in Oregon on chemical policy; initiated the “Healthy Lawns” social marketing campaign; and launched the Take On Toxics daycare toxics education program.

.....

OREGON LEGISLATIVE UPDATE

Some of the significant legislation adopted in FY 2006-07 include:

Bottle Bill Oregon’s original Bottle Bill was a pioneering piece of product stewardship legislation and many recyclers have worked to modernize it. SB 707 brings plastic water bottles into the system as of January 2009 and creates a task force to address broader issues, including redemption centers, recycling all beverage containers and increasing the bottle deposit.

Electronics Electronics waste or e-waste is an increasing issue in the region. Oregon’s HB 2626 creates a producer responsibility system for the management of obsolete electronics where manufacturers will either provide collection and recycling for their e-waste or pay for a program that’s contracted by the state. The legislation requires safe, convenient and environmentally sound recycling of specific electronic devices such as televisions and computers. Programs will begin operating in January 2009. Beginning in January 2010, electronic devices covered by this bill will be banned from disposal.



Blue Lake natural garden

Looking ahead

Mike Hoglund, Solid Waste and Recycling Director

As we've mentioned throughout this Year in Review, effective solid waste management and recycling practices are critical to a healthy and sustainable region. Recovering materials from solid waste decreases energy consumption, preserves natural resources, reduces greenhouse gas emissions, and, for many companies, saves money. Also, as demand for recyclables continues to grow, much of the material recycled in the region provides feedstock to local processors and manufacturers.

While the region continues to recycle more and more, a number of challenges lie ahead. Population growth, a vigorous economy and extensive construction in the Metro area have resulted in regional total and per person records for waste generated. In other words, we're consuming more and generating more trash than ever. For 2008, with the adoption of the Regional Solid Waste Management Plan, Metro and its state, local and private partners will focus even more on waste prevention and sustainability. Three key program areas for 2008 include:



Waste Reduction Due to lower metal supply, the 2006 recovery rate dipped three percent and now stands at 56 percent. To rebound and increase our recycling rate, the region looks to move forward on: 1) an updated business recycling program; 2) implementation of required recycling for construction/demolition debris; and 3) a strengthened food waste collection program. And, with local government efforts to move to recycling roll-carts, the region should once again be climbing toward its 64 percent recovery goal.



Sustainability The Regional Solid Waste Management Plan contains 23 objectives for increasing sustainable practices within the region's solid waste facilities and services. In 2008, we'll begin a collaborative implementation strategy and timeline for initiating actions to enhance the "triple bottom line" of economic, social and environmental sustainability for the regional solid waste system.



Waste Transport Metro's contract for waste transport services from its two transfer stations to the Columbia Ridge Landfill in Gilliam County expires December 31, 2009. To allow time for a new hauler to mobilize, the Metro Council is scheduled to award a new 10-year contract by summer 2008. It's anticipated that proposals will include options for barge, rail and truck. The Metro Council will weigh proposals against criteria that include ratepayer cost, environmental impact, service reliability, economic benefits and community impacts.

Finally, we at Metro recognize that it takes contributions from everyone in the region to reach our goals. To that end, we look forward to working with our state and local government partners, the private sector waste and recycling companies, and the citizens of the region on exciting and leading edge opportunities to better the region's recycling and waste system in the year ahead.



Metro | *People places. Open spaces.*

Your regional government

Clean air and clean water do not stop at city limits or county lines. Neither does the need for jobs, a thriving economy and good transportation choices for people and businesses in our region. Voters have asked Metro to help with the challenges that cross those lines and affect the 25 cities and three counties in the Portland metropolitan area.

A regional approach simply makes sense when it comes to protecting open space, caring for parks, planning for the best use of land, managing garbage disposal and increasing recycling. Metro oversees world-class facilities such as the Oregon Zoo, which contributes to conservation and education, and the Oregon Convention Center, which benefits the region's economy.

Your Metro representatives

Metro Council President – David Bragdon

Metro Councilors

Rod Park, District 1

Carlotta Collette, District 2

Carl Hosticka, District 3;

Kathryn Harrington, District 4

Rex Burkholder, District 5

Robert Liberty, District 6.

Auditor – Suzanne Flynn

www.metro-region.org